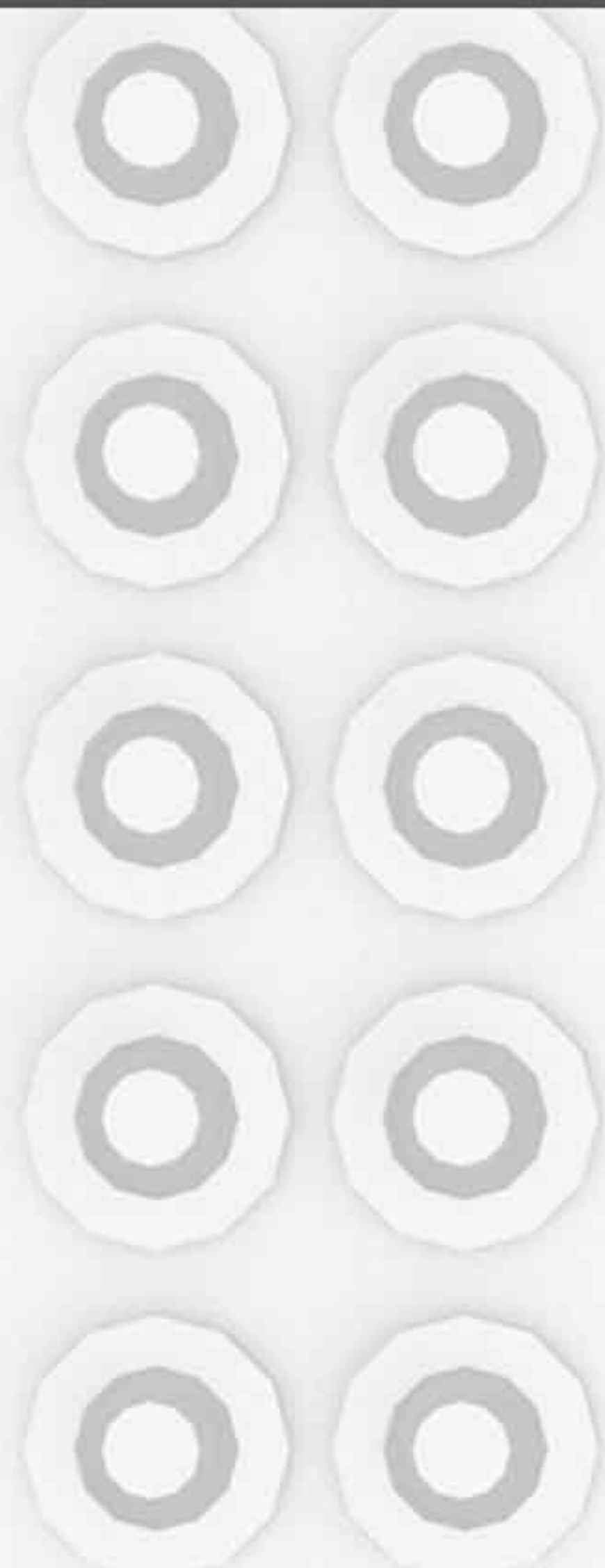
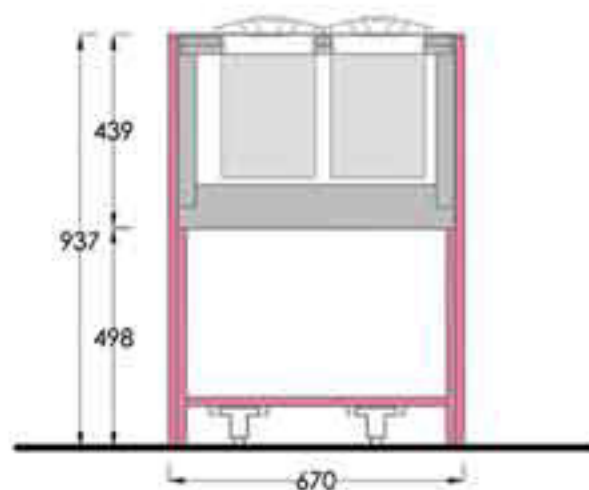


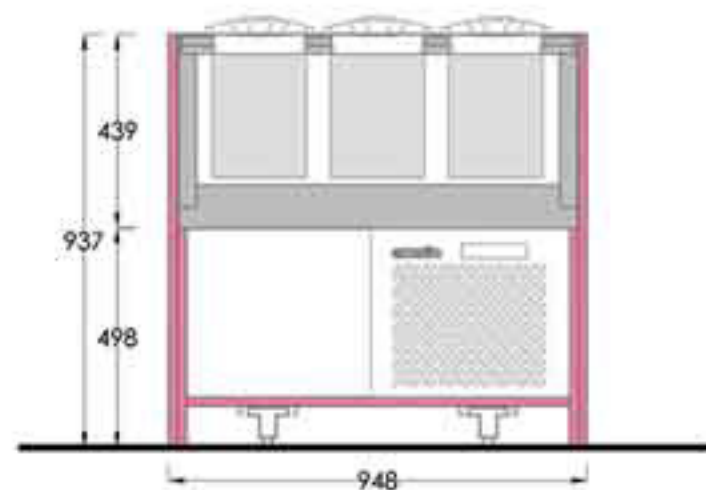
# metropolitan \_ BANCO POZZETTI



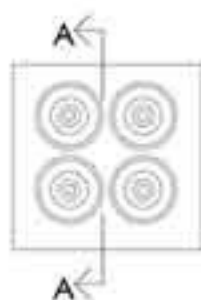




A-A  
VISTA LATERALE  
SENZA RISERVA

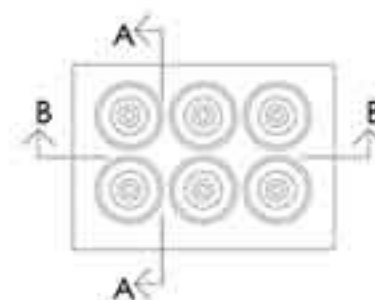


B-B  
VISTA FRONTALE  
SENZA RISERVA



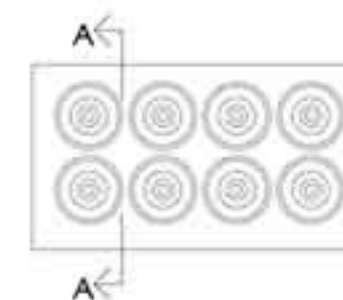
L 684 mm

|               |           |
|---------------|-----------|
| Pow (W)       | 360       |
| Pow ABS (W/A) | 380 / 2.5 |



L 948 mm

|               |           |
|---------------|-----------|
| Pow (W)       | 450       |
| Pow ABS (W/A) | 420 / 2.8 |



L 1220 mm

|               |         |
|---------------|---------|
| Pow (W)       | 600     |
| Pow ABS (W/A) | 560 / 3 |

CARATTERISTICHE TECNICHE

TECHNICAL FEATURES

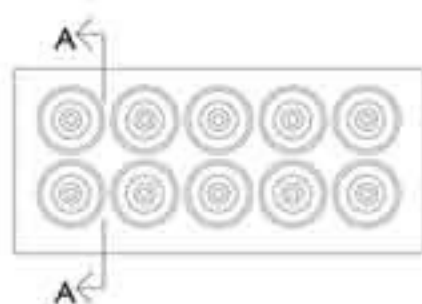
Vasca coibentata in poliuretano ad alta densità, completa di serpentina in tubo di rame affogata e valvola di espansione; vasca interna in acciaio inox a tenuta ermetica per il contenimento della miscela "glicole e acqua"; materiale isolante sul fondo dei contenitori per impedire alla carapina di attaccarsi al fondo; predisposizione per carapine cilindriche di diametro 190 mm x h. 250; quadro comando digitale; sbrinatorio manuale; top in acciaio inox; zoccolatura con piedini regolabili in altezza.

Insulated tub in high-density polyurethane, complete with submerged copper coil and expansion valve; internal tub in sealed stainless steel to contain the glycol and water mixture; insulation material on well bottoms to prevent canisters from freezing in place; suitable for cylindrical canisters with diameter 190 mm and height 250 mm; digital control panel; manual defrosting; stainless steel top; skirting with feet adjustable in height.

PRESTAZIONI

PERFORMANCES

|                                      |                                  |                 |
|--------------------------------------|----------------------------------|-----------------|
| Temperatura di esercizio pozzetto °C | Cabinet operating temperature °C | -20 °C          |
| Compressore                          | Compressor                       | ermetico        |
| Nr compressori                       | Compressor nr                    | 1               |
| Sbrinatorio                          | Defrost                          | manuale         |
| Gas refrigerante                     | Gas Type                         | R 404 A         |
| Tensione di alimentazione V/ph/Hz    | Electric supply V/ph/Hz          | 230V/ 1 / 50-60 |



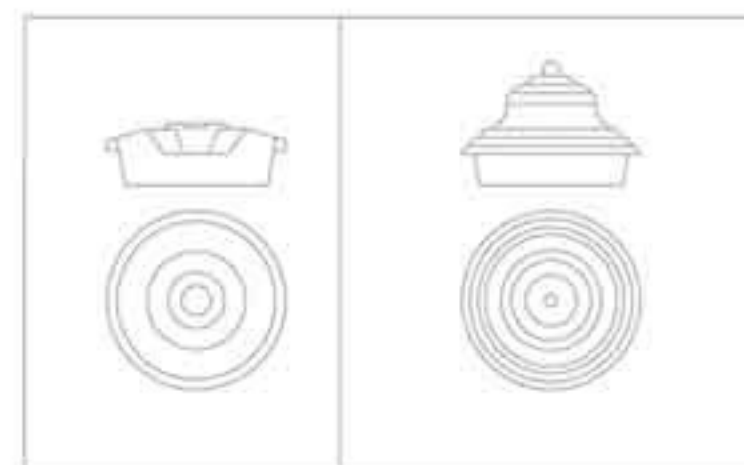
L 1488 mm

|               |         |
|---------------|---------|
| Pow (W)       | 700     |
| Pow ABS (W/A) | 650 / 3 |

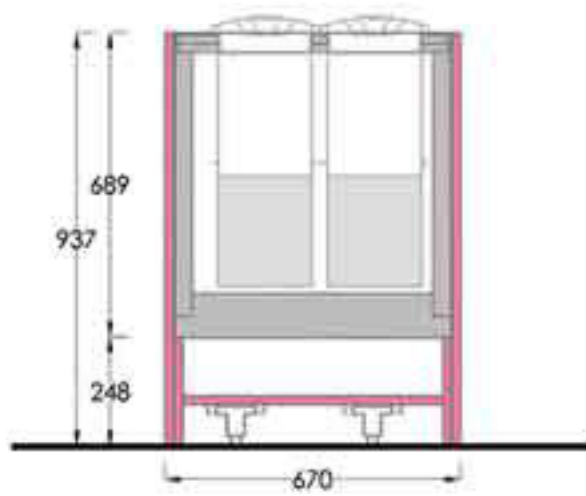
ACCESSORI

- Carapina cilindrica in acciaio inox Ø190 x h. 250 mm Lt. 7
- Coperchio circolare in acciaio inox con cornice
- Coperchio circolare bombato mod. Liberty in acciaio inox con cornice
- Termometro rilevamento temperatura glicole
- Glicole alimentare in tanica Lt. 20

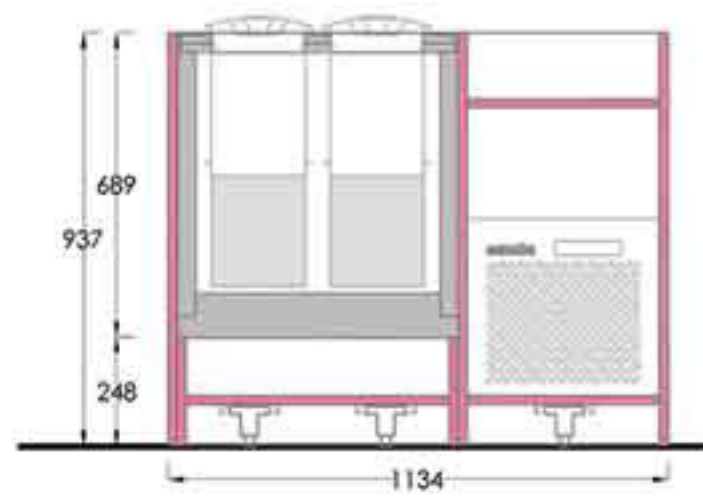
COPERCHIO IN ACCIAIO INOX CON CORNICE    COPERCHIO STILE LIBERTY IN ACCIAIO INOX CON CORNICE



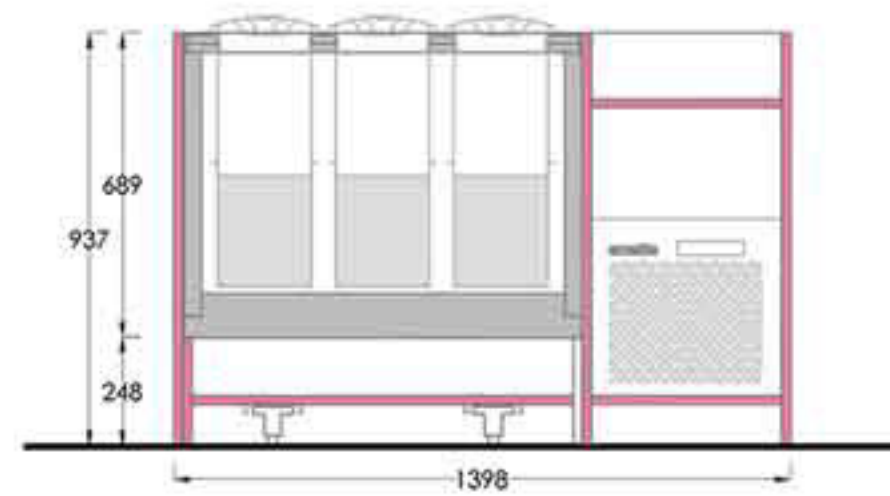




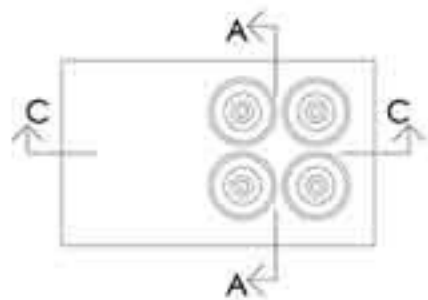
A-A  
VISTA LATERALE  
CON RISERVA



C-C  
VISTA FRONTALE  
CON RISERVA

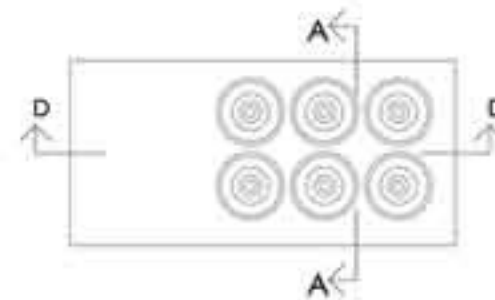


D-D  
SEZIONE LONGITUDINALE  
CON RISERVA



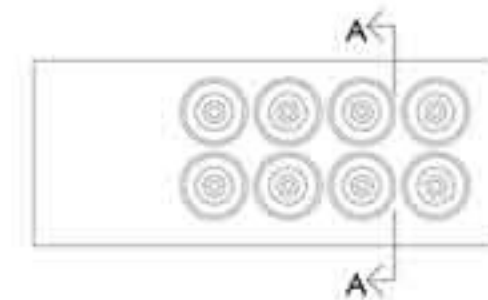
L 1134 mm

|               |           |
|---------------|-----------|
| Pow (W)       | 450       |
| Pow ABS (W/A) | 420 / 2.8 |



L 1398 mm

|               |         |
|---------------|---------|
| Pow (W)       | 600     |
| Pow ABS (W/A) | 560 / 3 |



L 1670 mm

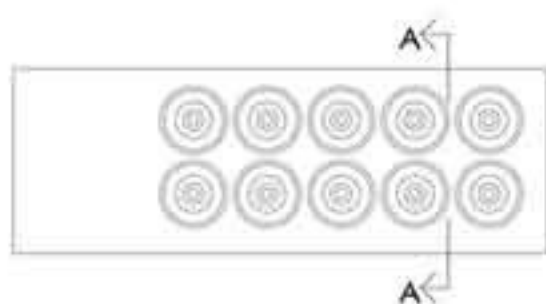
|               |         |
|---------------|---------|
| Pow (W)       | 700     |
| Pow ABS (W/A) | 650 / 3 |

**CARATTERISTICHE TECNICHE**

TECHNICAL FEATURES

Vasca coibentata in poliuretano ad alta densità, completa di serpentina in tubo di rame affogata e valvola di espansione; vasca interna in acciaio inox a tenuta ermetica per il contenimento della miscela "glicole e acqua"; materiale isolante sul fondo dei contenitori per impedire alla carapina di risera di attaccarsi al fondo; predisposizione per carapine cilindriche di diametro 190 mm x h. 250; quadro comando digitale, sbrinatorio manuale; top in acciaio inox; zoccolatura con piedini regolabili in altezza.

Insulated tub in high-density polyurethane, complete with submerged copper coil and expansion valve; internal tub in sealed stainless steel to contain the glycol and water mixture; insulation material on well bottoms to prevent backup canisters from freezing in place; suitable for cylindrical canisters with diameter 190 mm and height 250 mm; digital control panel; manual defrosting; stainless steel top; skirting with feet adjustable in height.



**L 1938 mm**

|               |         |
|---------------|---------|
| Pow (W)       | 900     |
| Pow ABS (W/A) | 740 / 3 |

**ACCESSORI**

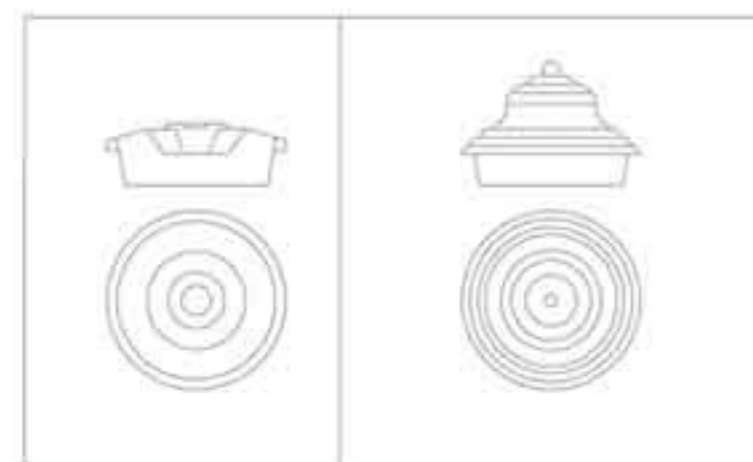
- Carapina cilindrica in acciaio inox Ø190 x h. 250 mm Lt. 7
- Coperchio circolare in acciaio inox con cornice
- Coperchio circolare bombato mod. Liberty in acciaio inox con cornice
- Termometro rilevamento temperatura glicole
- Glicole alimentare in tanica Lt. 20

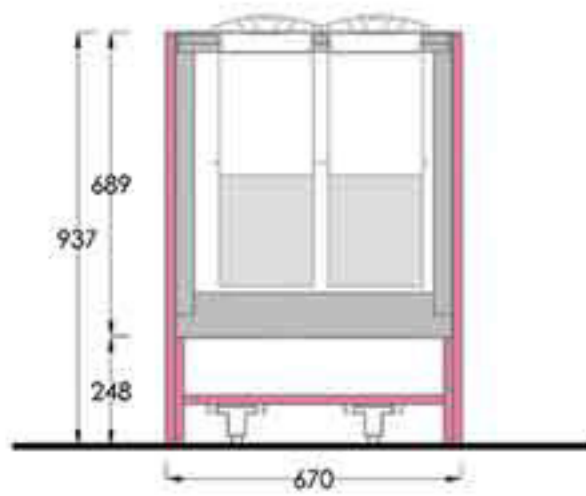
**PRESTAZIONI**

PERFORMANCES

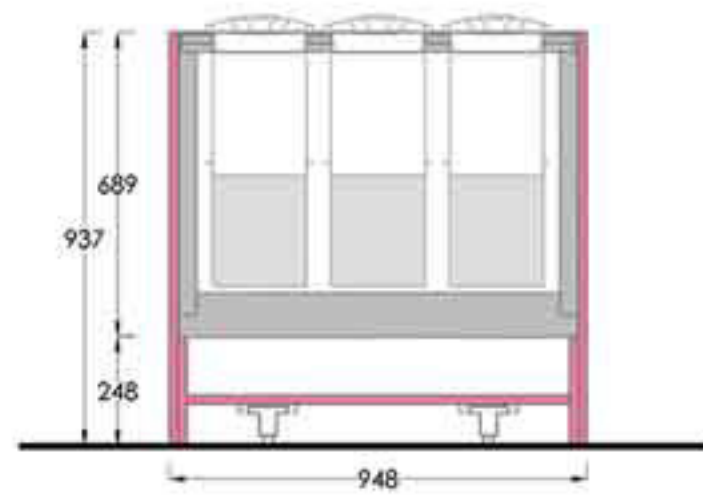
|                                      |                                  |                 |
|--------------------------------------|----------------------------------|-----------------|
| Temperatura di esercizio pozzetto °C | Cabinet operating temperature °C | -20 °C          |
| Compressore                          | Compressor                       | ermetico        |
| Nr compressori                       | Compressor nr                    | 1               |
| Sbrinatorio                          | Defrost                          | manuale         |
| Gas refrigerante                     | Gas Type                         | R 404 A         |
| Tensione di alimentazione V/ph/Hz    | Electric supply V/ph/Hz          | 230V/ 1 / 50-60 |

COPERCHIO IN ACCIAIO INOX CON CORNICE    COPERCHIO STILE LIBERTY IN ACCIAIO INOX CON CORNICE



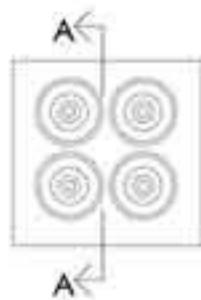


A-A  
VISTA LATERALE  
CON RISERVA



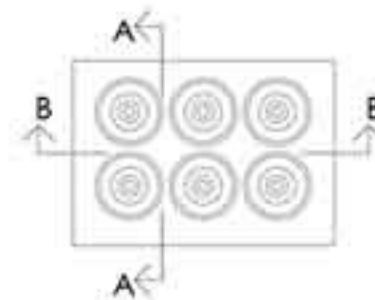
B-B  
VISTA FRONTALE  
CON RISERVA

CE



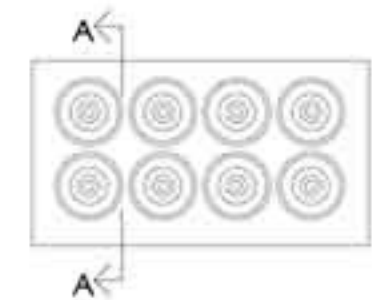
L 684 mm

|               |           |
|---------------|-----------|
| Pow (W)       | 450       |
| Pow ABS (W/A) | 420 / 2.8 |



L 948 mm

|               |         |
|---------------|---------|
| Pow (W)       | 600     |
| Pow ABS (W/A) | 560 / 3 |



L 1220 mm

|               |         |
|---------------|---------|
| Pow (W)       | 700     |
| Pow ABS (W/A) | 650 / 3 |

CARATTERISTICHE TECNICHE

TECHNICAL FEATURES

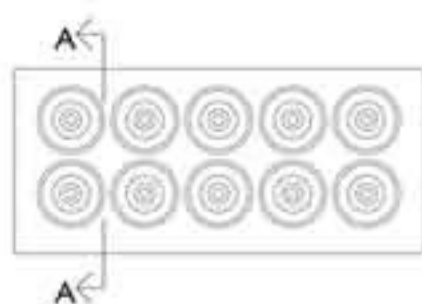
Vasca coibentata in poliuretano ad alta densità, completa di serpentina in tubo di rame affogata e valvola di espansione; vasca interna in acciaio inox a tenuta ermetica per il contenimento della miscela "glicole e acqua"; materiale isolante sul fondo dei contenitori per impedire alla carapina di risera di attaccarsi al fondo; predisposizione per carapine cilindriche di diametro 190 mm x h. 250; quadro comando digitale, sbrinamento manuale; top in acciaio inox; zoccolatura con piedini regolabili in altezza.

Insulated tub in high-density polyurethane, complete with submerged copper coil and expansion valve; internal tub in sealed stainless steel to contain the glycol and water mixture; insulation material on well bottoms to prevent backup canisters from freezing in place; suitable for cylindrical canisters with diameter 190 mm and height 250 mm; digital control panel; manual defrosting; stainless steel top; skirting with feet adjustable in height.

PRESTAZIONI

PERFORMANCES

|                                      |                                  |                 |
|--------------------------------------|----------------------------------|-----------------|
| Temperatura di esercizio pozzetto °C | Cabinet operating temperature °C | -20 °C          |
| Compressore                          | Compressor                       | ermetico        |
| Nr compressori                       | Compressor nr.                   | 1               |
| Sbrinamento                          | Defrost                          | manuale         |
| Gas refrigerante                     | Gas Type                         | R 404 A         |
| Tensione di alimentazione V/ph/Hz    | Electric supply V/ph/Hz          | 230V/ 1 / 50-60 |



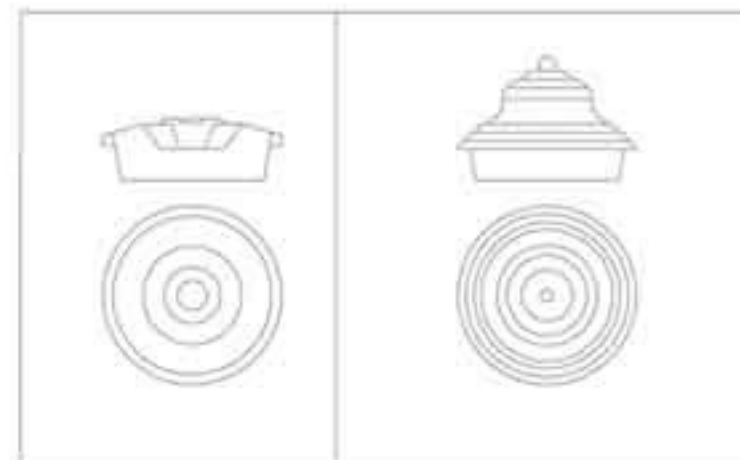
L 1488 mm

|               |         |
|---------------|---------|
| Pow (W)       | 900     |
| Pow ABS (W/A) | 740 / 3 |

ACCESSORI

- Carapina cilindrica in acciaio inox Ø190 x h. 250 mm Lt. 7
- Coperchio circolare in acciaio inox con cornice
- Coperchio circolare bombato mod. Liberty in acciaio inox con cornice
- Termometro rilevamento temperatura glicole
- Glicole alimentare in tanico Lt. 20

COPERCHIO IN ACCIAIO INOX CON CORNICE    COPERCHIO STILE LIBERTY IN ACCIAIO INOX CON CORNICE





# emmelle

ARREDAMENTI

*di Montali Romeo*

Zona Industriale  
Via Molinio Vigne, 3  
47825 Torriana (Rn)  
Tel. +39.0541.675721  
Fax. +39.0541.675310



[www.emmellearredamenti.com](http://www.emmellearredamenti.com)  
e-mail: [info@emmellearredamenti.com](mailto:info@emmellearredamenti.com)

metropolitan **kuadra** *royal exclusive* metropolitan **royal** **ku**  
metropolitan **royal** **ku**  
*exclusive* **royal exclusive** *kuadrame*  
**kuadra** metropolitan **royal** **royal**